

Pro-Watch® Release 3.7
Security Management System

Honeywell

A computer mouse cursor is pointing at a button labeled "Pro-Watch". The button is white with a blue border and is set against a red background. The text "Pro-Watch" is in a bold, black, sans-serif font. A small registered trademark symbol (®) is located to the right of the word "Watch".

Pro-Watch®

Easy To Use
Hard To Beat

Make Your Job Easier While You Increase Security

Now there's a new way to increase your level of security, save time and money on the job, and grow your security systems as your business grows. New Pro-Watch® Release 3.7 offers a complete security management solution including: access control, alarm monitoring, video badging and CCTV system interfaces. The software is now easier to install and use through the use of wizards, shortcuts and help menus. And you can customise information or events to fit your needs. Plus, you can choose one of three Pro-Watch editions that is just right for your business:

Enterprise Edition lets you manage your enterprise-wide security system from a single point, while maintaining local operational autonomy.

Corporate Edition is designed to meet the needs of the most demanding security management applications — with at least two users and 96 doors (and can be expanded to an unlimited number of doors).

Professional Edition is an economical solution for small to mid-size applications. Designed to operate efficiently without the requirement of a server-based operating system, it uses the Microsoft® Data Engine to provide a powerful solution for applications with one to five users and up to 64 entrances.

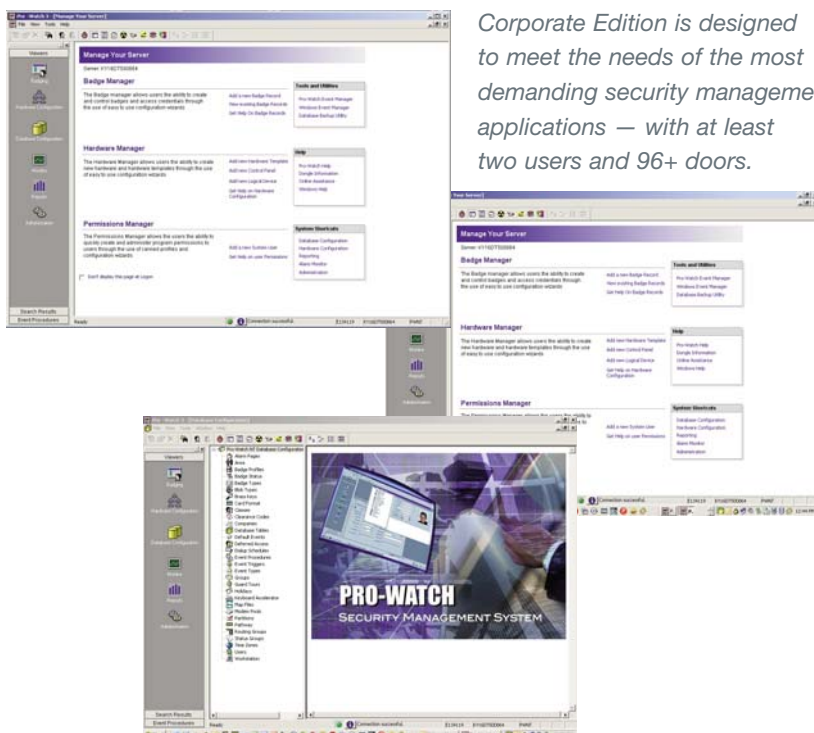
Lite Edition is the perfect security management system for entry-level systems because it lets you customise events to fit your needs.

Expand Your System Without Changing Your User Interface

- Go from a two-door system to a 20,000-door enterprise system
- Integrate with CCTV, intrusion, pagers, intercoms, biometric devices and digital storage devices
- Upgrade to Pro-Watch world-class security management without compromising the simplicity to make it work for you

Shortcut Your Work, Not Your Security

- Easy to install and use
- Streamlines, automates, standardises processes
- Maximum information control in an easy-to-use view
- Makes operators more efficient
- Customise features when desired



Corporate Edition is designed to meet the needs of the most demanding security management applications — with at least two users and 96+ doors.



Integrated with Digital Video Manager (DVM) R200 and LobbyWorks™

DVM is tightly integrated with Pro-Watch to provide seamless alarm and event-activated recording. Pro-Watch also offers a comprehensive integration to LobbyWorks, including tracking of visitor badges and designating any employee as host.

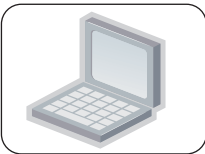
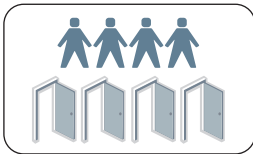

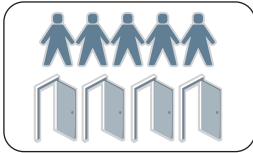
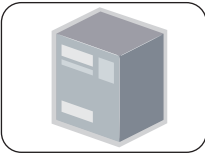
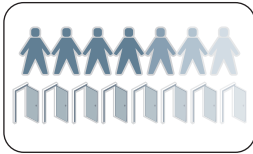

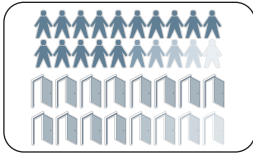
Interoperability with Honeywell Intrusion

Offering smarter security by managing multiple systems; access, video, and intrusion through one software interface.

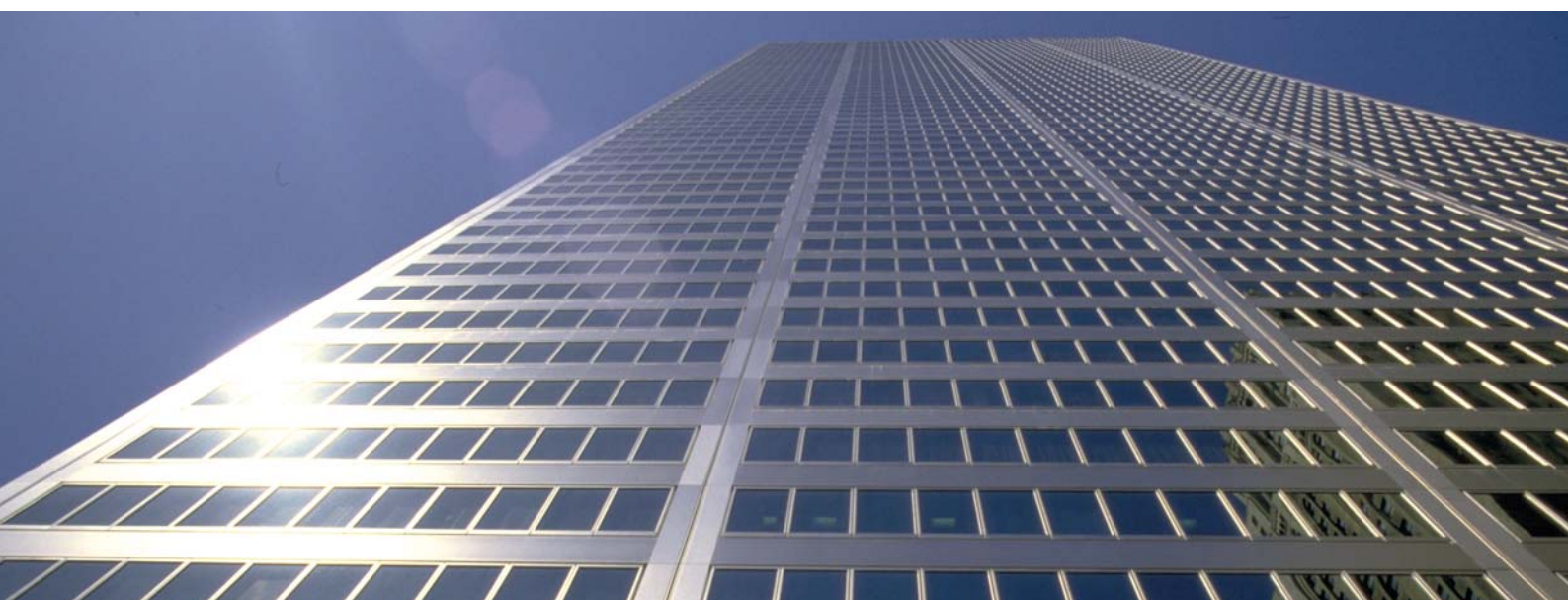
Why Pro-Watch® is Your Best Choice

- Windows®-based graphical user interface minimises operator training and helps organise tasks more efficiently
- Multiple database partitioning allows the system administrator to restrict access to sensitive information by User ID
- Direct import of AutoCAD drawings with layer views
- Global "Find" utility allows information to be easily accessed
- Integrated to DVM, Fusion and Rapid Eye digital video systems and Integral Technologies DVX Series DVRs
- Badging and CCTV functionality
- Allows biotech and pharmaceutical firms to address industry regulatory requirements
- Savable search templates
- Real point status monitor
- Macros combine operations into single keystroke or mouse click

Which Edition Best Fits Your Needs?

	OPERATING SYSTEM	USERS AND DOOR CAPABILITIES
LITE	 Microsoft® Data Engine	 1– 4 users 32 doors
PROFESSIONAL	 Microsoft® Data Engine	 1– 5 users 64 doors
CORPORATE	 SQL	 2+ users Unlimited doors
ENTERPRISE	 Multiple Servers	 Unlimited users and doors

“The new Pro-Watch incorporates suggestions that came from RFI and other field engineers, and we are very pleased with the results,” said Brad Wilson, president, RFI Communications & Security Systems. “The enhancements made increase the efficiency of the field staff by reducing training time and callbacks, which results in increased productivity and happy customers.”



Market Opportunities

Join the Fortune 500 companies who have harnessed the power of Pro-Watch to fully optimise their work force in the following industries:

- Airport/Seaport
- Education
- Finance/Banking
- Gaming
- Government
- Life Sciences
- Mobile
- Retail
- Utilities

For additional information,

please visit www.honeywell.com/security/uk

Honeywell Security & Data Collection

Honeywell Systems Group
Aston Fields Road
Whitehouse Industrial Estate
Runcorn
Cheshire
WA7 3DL
Tel: 08448 000 235
Fax: 01928 701 063
www.honeywell.com

HIS-PW-01-EN(0409)BR-GCSC
April 2009
© 2009 Honeywell International Inc.

The Honeywell logo is displayed in a bold, red, sans-serif font.